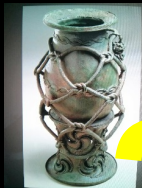


# ỌGỤ ARO

## OLU N' IGBO

# ORIGINAL CALENDAR



# 2020 / 2021

Author: NgoziChukwuKa Adaobuijele Udeeze Onwuagbu

Editor: Ifeanyichukwu Nwoye Nwandu

All Rights Reserved. © 2018 N A U Onwuagbu

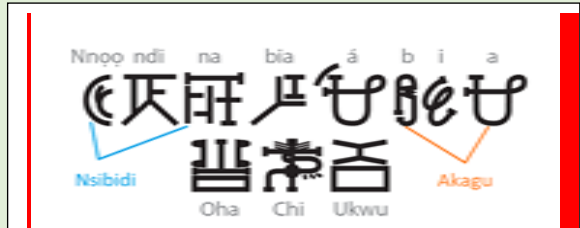
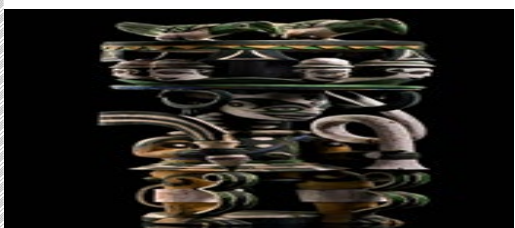
# ỌNWA MBỤ

**ỌNWA MBỤ (1)**  
**Start: Tue 4 Feb – End Mon 2 March**

**IGBO 2019/ 2020**



EKE (Ọkụ)	ỌRIE (Mmiri)	AFỌ (Ala)	NKWỌ (Ikuku)	EKE (Fire)	ỌRIE (Water)	AFỌ (Earth)	NKWỌ (Air)
<b>Eke days are Igbo sacred days</b>							<b>1</b> (Feb 4 Tue)
<b>2</b> (Feb 5 Wed)	<b>3</b> (Feb 6 Thurs)	<b>4</b> (Feb 7 Fri)	<b>5</b> (Feb 8 Sat)	<b>6</b> (Feb 9 Sun)	<b>7</b> (Feb 10 Mon)	<b>8</b> (Feb 11 Tue)	<b>9</b> (Feb 12 Wed)
<b>10</b> (Feb 13 Thurs)	<b>11</b> (Feb 14 Fri)	<b>12</b> (Feb 15 Sat)	<b>13</b> (Feb 16 Sun)	<b>14</b> (Feb 17 Mon)	<b>15</b> (Feb 18 Tue)	<b>16</b> (Feb 19 Wed)	<b>17</b> (Feb 20 Thurs)
<b>18</b> (Feb 21 Fri)	<b>19</b> (Feb 22 Sat)	<b>20</b> (Feb 23 Sun)	<b>21</b> (Feb 24 Mon)	<b>22</b> (Feb 25 Tue)	<b>23</b> (Feb 26 Wed)	<b>24</b> (Feb 27 Thurs)	<b>25</b> (Feb 28 Fri)
<b>26</b> (Feb 29 Sat)	<b>27</b> (March 1 Sun)	<b>28</b> (March 2 Mon)					



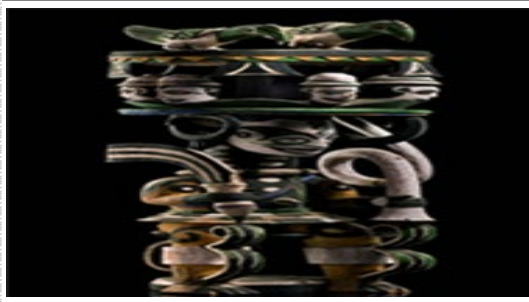
# ỌNWA ABỤA

**ỌNWA ABỤA (2) Start: Tue 3 March – End Mon 30 March**

**IGBO 2020 / 2021**



EKE (Ọkụ)	ỌRIE (Mmiri)	AFO (Ala)	NKWO (Ikuku)	EKE (Fire)	ỌRIE (Water)	AFO (Earth)	NKWO (Air)
<b>Eke days are Igbo sacred days</b>							
			<b>1</b> (March 3 Tue)	<b>2</b> (March 4 Wed)	<b>3</b> (March 5 Thurs)	<b>4</b> (March 6 Fri)	<b>5</b> (March 7 Sat)
<b>6</b> (March 8 Sun)	<b>7</b> (March 9 Mon)	<b>8</b> (March 10 Tue)	<b>9</b> (March 11 Wed)	<b>10</b> (March 12 Thurs)	<b>11</b> (March 13 Fri)	<b>12</b> (March 14 Sat)	<b>13</b> (March 15 Sun)
<b>14</b> (March 16 Mon)	<b>15</b> (March 17 Tue)	<b>16</b> (March 18 Wed)	<b>17</b> (March 19 Thurs)	<b>18</b> (March 20 Fri)	<b>19</b> (March 21 Sat)	<b>20</b> (March 22 Sun)	<b>21</b> (March 23 Mon)
<b>22</b> (March 24 Tue)	<b>23</b> (March 25 Wed)	<b>24</b> (March 26 Thurs)	<b>25</b> (March 27 Fri)	<b>26</b> (March 28 Sat)	<b>27</b> (March 29 Sun)	<b>28</b> (March 30 Mon)	



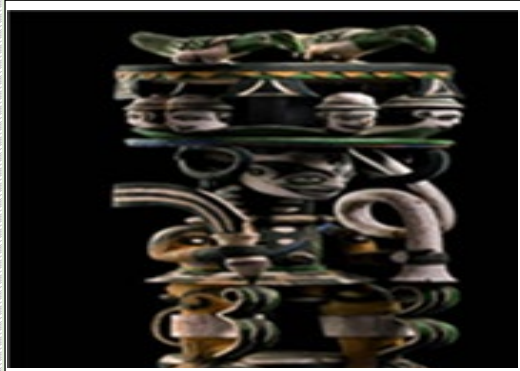
# ỌNWA IFE EKE

**ỌNWA ATỌ (3) Start:April 2 – End April 29**

**IGBO 2020 / 2021**



EKE (Ọkụ)	ỌRIE (Mmiri)	AFO (Ala)	NKWO (Ikuku)	EKE (Fire)	ỌRIE (Water)	AFO (Earth)	NKWO (Air)
<b>Eke days are Igbo sacred days</b>							<b>1</b> (April 2 Tue)
<b>2</b> (April 3 Wed)	<b>3</b> (April 4 Thurs)	<b>4</b> (April 5 Fri)	<b>5</b> (April 6 Sat)	<b>6</b> (April 7 Sun)	<b>7</b> (April 8 Mon)	<b>8</b> (April 9 Tue)	<b>9</b> (April 10 Wed)
<b>10</b> (April 11 Thurs)	<b>11</b> (April 12 Fri)	<b>12</b> (April 13 Sat)	<b>13</b> (April 14 Sun)	<b>14</b> (April 15 Mon)	<b>15</b> (April 16 Tue)	<b>16</b> (April 17 Wed)	<b>17</b> (April 18 Thurs)
<b>18</b> (April 19 Fri)	<b>19</b> (April 20 Sat)	<b>20</b> (April 21 Sun)	<b>21</b> (April 22 Mon)	<b>22</b> (April 23 Tue)	<b>23</b> (April 24 Wed)	<b>24</b> (April 25 Thurs)	<b>25</b> (April 26 Fri)
<b>26</b> (April 27 Sat)	<b>27</b> (April 28 Sun)	<b>28</b> (April 29 Mon)					



# ỌNWA ANỌ

**ỌNWA ANỌ (4) Start: April 30 – End May 27**

**IGBO 2020 / 2021**

EKE (Ọkụ)	ỌRIE (Mmiri)	AFO (Ala)	NKWỌ (Ikuku)	EKE (Fire)	ỌRIE (Water)	AFO (Earth)	NKWỌ (Air)
<b>Eke days are Igbo sacred days</b>							
			<b>1</b> (April 30 Tue)	<b>2</b> (May 1 Wed)	<b>3</b> (May 2 Thurs)	<b>4</b> (May 3 Fri)	<b>5</b> (May 4 Sat)
<b>6</b> (May 5 Sun)	<b>7</b> (May 6 Mon)	<b>8</b> (May 7 Tue)	<b>9</b> (May 8 Wed)	<b>10</b> (May 9 Thurs)	<b>11</b> (May 10 Fri)	<b>12</b> (May 11 Sat)	<b>13</b> (May 12 Sun)
<b>14</b> (May 13 Mon)	<b>15</b> (May 14 Tue)	<b>16</b> (May 15 Wed)	<b>17</b> (May 16 Thurs)	<b>18</b> (May 17 Fri)	<b>19</b> (May 18 Sat)	<b>20</b> (May 19 Sun)	<b>21</b> (May 20 Mon)
<b>22</b> (May 21 Tue)	<b>23</b> (May 22 Wed)	<b>24</b> (May 23 Thurs)	<b>25</b> (May 24 Fri)	<b>26</b> (May 25 Sat)	<b>27</b> (May 26 Sun)	<b>28</b> (May 27 Mon)	

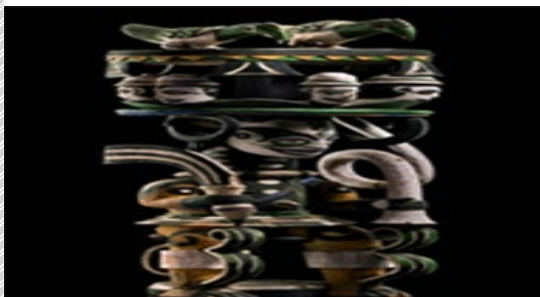


# ỌNWA AGWỤ

**ỌNWA ịSE (5) Start: May 28 – End June 24**

**IGBO 2020 / 2021**

EKE (Ọkụ)	ỌRIE (Mmiri)	AFO (Ala)	NKWỌ (Ikuku)	EKE (Fire)	ỌRIE (Water)	AFO (Earth)	NKWỌ (Air)
<b>Eke days are Igbo sacred days</b>							
							<b>1</b> (May 28 Tue)
<b>2</b> (May 29 Wed)	<b>3</b> (May 30 Thurs)	<b>4</b> (May 31 Fri)	<b>5</b> (June 1 Sat)	<b>6</b> (June 2 Sun)	<b>7</b> (June 3 Mon)	<b>8</b> (June 4 Tue)	<b>9</b> (June 5 Wed)
<b>10</b> (June 6 Thurs)	<b>11</b> (June 7 Fri)	<b>12</b> (June 8 Sat)	<b>13</b> (June 9 Sun)	<b>14</b> (June 10 Mon)	<b>15</b> (June 11 Tue)	<b>16</b> (June 12 Wed)	<b>17</b> (June 13 Thurs)
<b>18</b> (June 14 Fri)	<b>19</b> (June 15 Sat)	<b>20</b> (June 16 Sun)	<b>21</b> (June 17 Mon)	<b>22</b> (June 18 Tue)	<b>23</b> (June 19 Wed)	<b>24</b> (June 20 Thurs)	<b>25</b> (June 21 Fri)
<b>26</b> (June 22 Sat)	<b>27</b> (June 23 Sun)	<b>28</b> (June 24 Mon)					



# ỌNWA IFEJIỌKỤ

**ỌNWA ISII (6) START: June 25 – End July 22**

**IGBO 2020 / 2021**

EKE (Ọkụ)	ỌRIE (Mmiri)	AFO (Ala)	NKWO (Ikuku)	EKE (Fire)	ỌRIE (Water)	AFO (Earth)	NKWO (Air)
<b>Eke days are Igbo sacred days</b>							
			<b>1</b> (June 25 Tue)	<b>2</b> (June 26 Wed)	<b>3</b> (June 27 Thurs)	<b>4</b> (June 28 Fri)	<b>5</b> (June 29 Sat)
<b>6</b> (June 30 Sun)	<b>7</b> (July 1 Mon)	<b>8</b> (July 2 Tue)	<b>9</b> (July 3 Wed)	<b>10</b> (July 4 Thurs)	<b>11</b> (July 5 Fri)	<b>12</b> (July 6 Sat)	<b>13</b> (July 7 Sun)
<b>14</b> (July 8 Mon)	<b>15</b> (July 9 Tue)	<b>16</b> (July 10 Wed)	<b>17</b> (July 11 Thurs)	<b>18</b> (July 12 Fri)	<b>19</b> (July 13 Sat)	<b>20</b> (July 14 Sun)	<b>21</b> (July 15 Mon)
<b>22</b> (July 16 Tue)	<b>23</b> (July 17 Wed)	<b>24</b> (July 18 Thurs)	<b>25</b> (July 19 Fri)	<b>26</b> (July 20 Sat)	<b>27</b> (July 21 Sun)	<b>28</b> (July 22 Mon)	

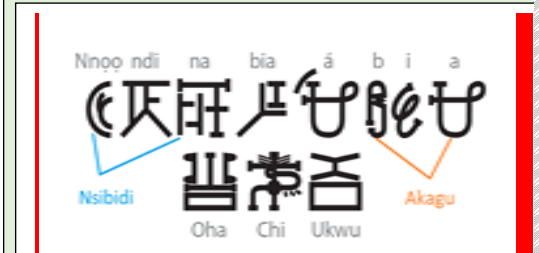


# ỌNWA ALỌM CHI

**ỌNWA ASAA (7) Start: July 23 – End August 19**

**IGBO 2020 / 2021**

EKE (Ọkụ)	ỌRIE (Mmiri)	AFỌ (Ala)	NKWỌ (Ikuku)	EKE (Fire)	ỌRIE (Water)	AFỌ (Earth)	NKWỌ (Air)
				<b>Eke days are Igbo sacred days</b>			
							<b>1</b> (July 23 Tue)
<b>2</b> (July 24 Wed)	<b>3</b> (July 25 Thurs)	<b>4</b> (July 26 Fri)	<b>5</b> (July 27 Sat)	<b>6</b> (July 28 Sun)	<b>7</b> (July 29 Mon)	<b>8</b> (July 30 Tue)	<b>9</b> (July 31 Wed)
<b>10</b> (Aug 1 Thurs)	<b>11</b> (Aug 2 Fri)	<b>12</b> (Aug 3 Sat)	<b>13</b> (Aug 4 Sun)	<b>14</b> (Aug 5 Mon)	<b>15</b> (Aug 6 Tue)	<b>16</b> (Aug 7 Wed)	<b>17</b> (Aug 8 Thurs)
<b>18</b> (Aug 9 Fri)	<b>19</b> (Aug 10 Sat)	<b>20</b> (Aug 11 Sun)	<b>21</b> (Aug 12 Mon)	<b>22</b> (Aug 13 Tue)	<b>23</b> (Aug 14 Wed)	<b>24</b> (Aug 15 Thurs)	<b>25</b> (Aug 16 Fri)
<b>26</b> (Aug 17 Sat)	<b>27</b> (Aug 18 Sun)	<b>28</b> (Aug 19 Mon)					



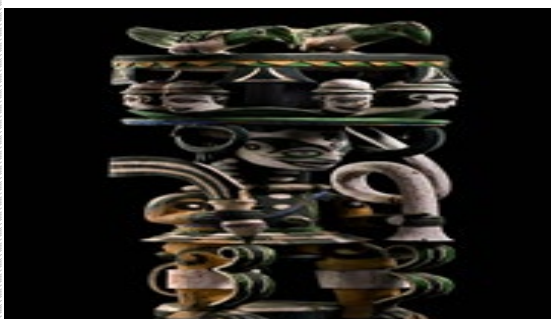


# ỌNWA İLỌ MMỤỌ

ỌNWA ASATỌ (8) Start August 20 – End Sept 16

IGBO 2020 / 2021

EKE (Ọkụ)	ỌRIE (Mmiri)	AFO (Ala)	NKWO (Ikuku)	EKE (Fire)	ỌRIE (Water)	AFO (Earth)	NKWO (Air)
<b>Eke days are Igbo sacred days</b>							
			<b>1</b> (Aug 20 Tue)	<b>2</b> (Aug 21 Wed)	<b>3</b> (Aug 22 Thurs)	<b>4</b> (Aug 23 Fri)	<b>5</b> (Aug 24 Sat)
<b>6</b> (Aug 25 Sun)	<b>7</b> (Aug 26 Mon)	<b>8</b> (Aug 27 Tue)	<b>9</b> (Aug 28 Wed)	<b>10</b> (Aug 29 Thurs)	<b>11</b> (Aug 30 Fri)	<b>12</b> (Aug 31 Sat)	<b>13</b> (Sept 1 Sun)
<b>14</b> (Sept 2 Mon)	<b>15</b> (Sept 3 Tue)	<b>16</b> (Sept 4 Wed)	<b>17</b> (Sept 5 Thurs)	<b>18</b> (Sept 6 Fri)	<b>19</b> (Sept 7 Sat)	<b>20</b> (Sept 8 Sun)	<b>21</b> (Sept 9 Mon)
<b>22</b> (Sept 10 Tue)	<b>23</b> (Sept 11 Wed)	<b>24</b> (Sept 12 Thurs)	<b>24</b> (Sept 13 Fri)	<b>26</b> (Sept 14 Sat)	<b>27</b> (Sept 15 Sun)	<b>28</b> (Sept 16 Mon)	



# ỌNWA ANA

**ỌNWA ITENANỊ (9) Start Sept 17 – End Oct 14**

**IGBO 2020/ 2021**

EKE (Ọkụ)	ỌRIE (Mmiri)	AFO (Ala)	NKWO (Ikuku)	EKE (Fire)	ỌRIE (Water)	AFO (Earth)	NKWO (Air)
<b>Eke days are Igbo sacred days</b>							
							<b>1</b> (Sept 17 Tue)
<b>2</b> (Sept 18 Wed)	<b>3</b> (Sept 19 Thurs)	<b>4</b> (Sept 20 Fri)	<b>5</b> (Sept 21 Sat)	<b>6</b> (Sept 22 Sun)	<b>7</b> (Sept 23 Mon)	<b>8</b> (Sept 24 Tue)	<b>9</b> (Sept 25 Wed)
<b>10</b> (Sept 26 Thurs)	<b>11</b> (Sept 27 Fri)	<b>12</b> (Sept 28 Sat)	<b>13</b> (Sept 29 Sun)	<b>14</b> (Sept 30 Mon)	<b>15</b> (Oct 1 Tue)	<b>16</b> (Oct 2 Wed)	<b>17</b> (Oct 3 Thurs)
<b>18</b> (Oct 4 Fri)	<b>19</b> (Oct 5 Sat)	<b>20</b> (Oct 6 Sun)	<b>21</b> (Oct 7 Mon)	<b>22</b> (Oct 8 Tue)	<b>23</b> (Oct 9 Wed)	<b>24</b> (Oct 10 Thurs)	<b>25</b> (Oct 11 Fri)
<b>26</b> (Oct 12 Sat)	<b>27</b> (Oct 13 Sun)	<b>28</b> (Oct 14 Mon)					



# ỌNWA ỌKIKE

**ỌNWA ILI (10) Start Oct 15 – End Nov 11**

**IGBO 2020/ 2021**

EKE (Ọkụ)	ỌRIE (Mmiri)	AFO (Ala)	NKWỌ (Ikuku)	EKE (Fire)	ỌRIE (Water)	AFO (Earth)	NKWỌ (Air)
<b>Eke days are Igbo sacred days</b>							
			<b>1</b> (Oct 15 Tue)	<b>2</b> (Oct 16 Wed)	<b>3</b> (Oct 17 Thurs)	<b>4</b> (Oct 18 Fri)	<b>5</b> (Oct 19 Sat)
<b>6</b> (Oct 20 Sun)	<b>7</b> (Oct 21 Mon)	<b>8</b> (Oct 22 Tue)	<b>9</b> (Oct 23 Wed)	<b>10</b> (Oct 24 Thurs)	<b>11</b> (Oct 25 Fri)	<b>12</b> (Oct 26 Sat)	<b>13</b> (Oct 27 Sun)
<b>14</b> (Oct 28 Mon)	<b>15</b> (Oct 29 Tue)	<b>16</b> (Oct 30 Wed)	<b>17</b> (Oct 31 Thurs)	<b>18</b> (Nov 1 Fri)	<b>19</b> (Nov 2 Sat)	<b>20</b> (Nov 3 Sun)	<b>21</b> (Nov 4 Mon)
<b>22</b> (Nov 5 Tue)	<b>23</b> (Nov 6 Wed)	<b>24</b> (Nov 7 Thurs)	<b>25</b> (Nov 8 Fri)	<b>26</b> (Nov 9 Sat)	<b>27</b> (Nov 10 Sun)	<b>28</b> (Nov 11 Mon)	

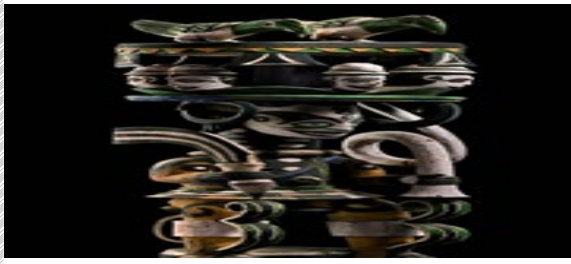


# ỌNWA AJA-ANA

**ỌNWA ILI N'ỌFU (11) Start Nov 12 – End Dec 9**

**IGBO 2019 / 2020**

EKE (Ọkụ)	ỌRIE (Mmiri)	AFO (Ala)	NKWO (Ikuku)	EKE (Fire)	ỌRIE (Water)	AFO (Earth)	NKWO (Air)
<b>Eke days are Igbo sacred days</b>							
							<b>1</b> (Nov 12 Tue)
<b>2</b> (Nov 13 Wed)	<b>3</b> (Nov 14 Thurs)	<b>4</b> (Nov 15 Fri)	<b>5</b> (Nov 16 Sat)	<b>6</b> (Nov 17 Sun)	<b>7</b> (Nov 18 Mon)	<b>8</b> (Nov 19 Tue)	<b>9</b> (Nov 20 Wed)
<b>10</b> (Nov 21 Thurs)	<b>11</b> (Nov 22 Fri)	<b>12</b> (Nov 23 Sat)	<b>13</b> (Nov 24 Sun)	<b>14</b> (Nov 25 Mon)	<b>15</b> (Nov 26 Tue)	<b>16</b> (Nov 27 Wed)	<b>17</b> (Nov 28 Thurs)
<b>18</b> (Nov 29 Fri)	<b>19</b> (Nov 30 Sat)	<b>20</b> (Dec 1 Sun)	<b>21</b> (Dec 2 Mon)	<b>22</b> (Dec 3 Tue)	<b>23</b> (Dec 4 Wed)	<b>24</b> (Dec 5 Thurs)	<b>25</b> (Dec 6 Fri)
<b>26</b> (Dec 7 Sat)	<b>27</b> (Dec 8 Sun)	<b>28</b> (Dec 9 Mon)					



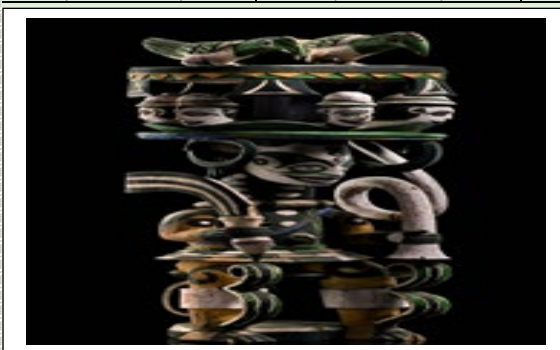
# ỌNWA EDE AJA-ANA

**ỌNWA ILI N'ABỤA (12) Start Dec 10 – End Jan 6**

**IGBO 2020 / 2021**



EKE (Ọkụ)	ỌRIE (Mmiri)	AFO (Ala)	NKWỌ (Ikuku)	EKE (Fire)	ỌRIE (Water)	AFO (Earth)	NKWỌ (Air)
<b>Eke days are Igbo sacred days</b>							
			<b>1</b> (Dec 10 Tue)	<b>2</b> (Dec 11 Wed)	<b>3</b> (Dec 12 Thurs)	<b>4</b> (Dec 13 Fri)	<b>5</b> (Dec 14 Sat)
<b>6</b> (Dec 15 Sun)	<b>7</b> (Dec 16 Mon)	<b>8</b> (Dec 17 Tue)	<b>9</b> (Dec 18 Wed)	<b>10</b> (Dec 19 Thurs)	<b>11</b> (Dec 20 Fri)	<b>12</b> (Dec 21 Sat)	<b>13</b> (Dec 22 Sun)
<b>14</b> (Dec 23 Mon)	<b>15</b> (Dec 24 Tue)	<b>16</b> (Dec 25 Wed)	<b>17</b> (Dec 26 Thurs)	<b>18</b> (Dec 27 Fri)	<b>19</b> (Dec 28 Sat)	<b>20</b> (Dec 29 Sun)	<b>21</b> (Dec 30 Mon)
<b>22</b> (Dec 31 Tue)	<b>23</b> (Jan 1 Wed)	<b>24</b> (2 Jan Thurs)	<b>25</b> (3 Jan Fri)	<b>26</b> (4 Jan Sat)	<b>27</b> (5 Jan Sun)	<b>28</b> (6 Jan Mon)	



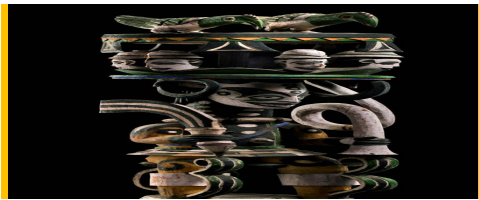
# ỌNWA ỤZỌ ALỤKWỤSÌ

**ỌNWA ILI N'ATỌ (13) Start Jan 7 – End Feb 2**

**IGBO 2020 / 2021**



EKE (Ọkụ)	ỌRIE (Mmiri)	AFO (Aja-Ana)	NKWỌ (Ikuku)	EKE (Fire)	ỌRIE (Water)	AFO (Earth)	NKWỌ (Air)
Eke days are Igbo sacred days							
							<b>1</b> (7Jan Tue)
<b>2</b> (8 Jan Wed)	<b>3</b> (9 Jan Thurs)	<b>4</b> (10 Jan Fri)	<b>5</b> (11 Jan Sat)	<b>6</b> (12 Jan Sun)	<b>7</b> (13 Jan Mon)	<b>8</b> (14 Jan Tue)	<b>9</b> (15 Jan Wed)
<b>10</b> (16 Jan Thurs)	<b>11</b> (17 Jan Fri)	<b>12</b> (18 Jan Sat)	<b>13</b> (19 Jan Sun)	<b>14</b> (20 Jan Mon)	<b>15</b> (21 Jan Tue)	<b>16</b> (22 Jan Wed)	<b>17</b> (23 Jan Thurs)
<b>18</b> (24 Jan Fri)	<b>19</b> (25 Jan Sat)	<b>20</b> (26 Jan Sun)	<b>21</b> (27 Jan Mon)	<b>22</b> (28 Jan Tue)	<b>23</b> (29 Jan Wed)	<b>24</b> (30 Jan Thurs)	<b>25</b> (31 Jan Fri)
<b>26</b> (1Feb Sat)	<b>27</b> (2 Feb Sun)	<b>28</b> (3 Feb Mon)					



Nnọọ ndi na bia á b i a  
 天 臣 臣 臣 臣 臣  
 Nsibidi 臣 臣 臣 臣 臣 Akagu  
 Oha Chi Ukwu

## How to use this calendar

- In the Calendar, the big bold black numbers are the Igbo days
- Igbo month is 28 stable days whilst the Gregorian one shift from 28 to 31 days
- Whilst Igbo month ends on 28<sup>th</sup> day, the Western one continues until it clocks either 30 to 31 days.
- Igbo months and Western months only aligns every 112 years, the last was 2012.
- There is no evidence to suggest Igbo celebrate New Year day, this is a Western construct
- Igbo celebrates every month independently
- There is a festival on the 3<sup>rd</sup> Afo day welcoming the Aro Ofuu but note that this is not exactly the first Aro day.
- Igbo months circle between Afo and Nkwo which is when they are either starting or ending
- It is not year 2019 for the Igbo who have been in existence for much longer
- 4 days makes an Igbo IZU, 91 IZU is contained in Igbo year. 28 days makes up otu onwa Igbo (1month), 364 days is otu Mgba Aro (1 Igbo year).
- There are 13 months in each ARO Igbo (Igbo year).

## Time |



anwu/chi  
sun/day



onwa  
moon



afo  
year



ubochi  
day



taa  
today



izu  
week



éché  
tomorrow



nnyafu  
yesterday

## Origin

sun  
pictograph

moon  
logograph

moon +  
land

top +  
sun

sun +  
radical

four  
(cardinal) +  
enclosure

sun +  
legs

today +  
tree leaves  
(direction  
indication, 'behind')

## References

1. Anon. (n. d.). Kwusi / stop. Available: <http://2.bp.blogspot.com/-UHC18He256I/TmGV2OVK7HI/AAAAAAAAAic/3lgUMeJPBN4/s1600/stop.jpg>. Last accessed 20/01/2018.
2. Anon. (n. d.). Ndi n'abia abia. Available: <https://tse2.mm.bing.net/th?id=OIP.tKBPD7iiGWX0bf7arjhFswHaDZ&pid=15.1&P=0&w=341&h=157>. Last accessed 20/1/2018.
3. Anon. (n. d.). Time. Available: [http://2.bp.blogspot.com/-irGe6ByrPCs/Tol6pergBul/AAAAAAAAAnI/rOS7o\\_RKDpA/s1600/time.png](http://2.bp.blogspot.com/-irGe6ByrPCs/Tol6pergBul/AAAAAAAAAnI/rOS7o_RKDpA/s1600/time.png). Last accessed 20/01/2018.
4. Anon. (n. d.). 86264a9a5e34870f24e072938d9aba7b.jpg. Available: <https://i.pinimg.com/564x/86/26/4a/86264a9a5e34870f24e072938d9aba7b.jpg>. Last accessed 19 / 01 / 2018.
5. Anon. (n.d.). tumblr\_lvw2rjhity1qc3j1s.jpg. Available: 5. [http://media.tumblr.com/tumblr\\_lvw2rjhity1qc3j1s.jpg](http://media.tumblr.com/tumblr_lvw2rjhity1qc3j1s.jpg). Last accessed 19 / 01 / 2018.
6. Anon. (2018). When is New Moon in February 2018? Available: <https://days.to/when-is/new-moon/2018/2>. Last accessed 20/1/2018.
7. Eze Silver Ibenye. (Aug 24, 2015). Izu Igbo – Days of the Week. Available: <https://igbocalendar.com/izu-igbo-days-of-the-week>. Last accessed 07/02/2018.
8. Anon. (N.D.). Igbo Ukwu Bronze. Available: [https:// 142/flashcards/5574142/jpg/android\\_image\\_\\_11401747425162.jpg](https://142/flashcards/5574142/jpg/android_image__11401747425162.jpg). Last accessed 11/2/2018.